

#LoveOurRivers

River Food Chain: Who Eats What?

A food chain shows the relationship between different animals and plants and describes who eats what in the natural world.

A food chain shows how plants and animals get their energy.

- A food chain always starts with a PRODUCER which gets its energy from the SUN.
- A living thing that eats plants and animals is called a CONSUMER.
- PRIMARY CONSUMERS eat PRODUCERS. They are herbivores.
- SECONDARY CONSUMERS are animals which eat PRIMARY CONSUMERS.
- TERTIARY CONSUMERS are animals that feed on PRIMARY and SECONDARY CONSUMERS. They are PREY to the PREDATORS.
- A PREDATOR is an animal that eats other animals. PREDATORS are found at the top of the food chain.

Food chains can be affected by pollution like litter, chemicals, phosphates and sewage. Our changing climate affects our river food chains for example by flooding and drought. People can also have an effect on river quality.

Go outside and work in teams!

- use chalk to draw your own river food chains.
- what problems could affect the health of your river.
- how do these impact your food chains?
- could you improve the health of your local river?
- Visit our #LoveOurRivers page to make a pledge.



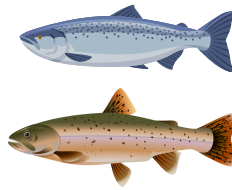
#LoveOurRivers

Using the examples below,
draw your own river food chains.

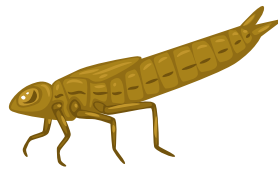
Predator
(Otter)



Tertiary consumer
(Salmon/Trout/
Kingfisher/Heron)



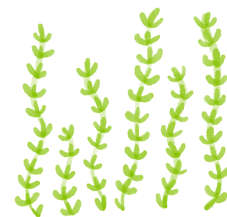
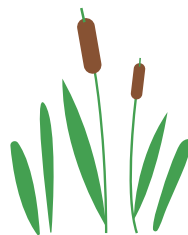
Secondary consumer
(Insects/Dipper)



Primary consumer
(Insects/Watervole)



Producer
(Plants)



Bannau
Brycheiniog

