

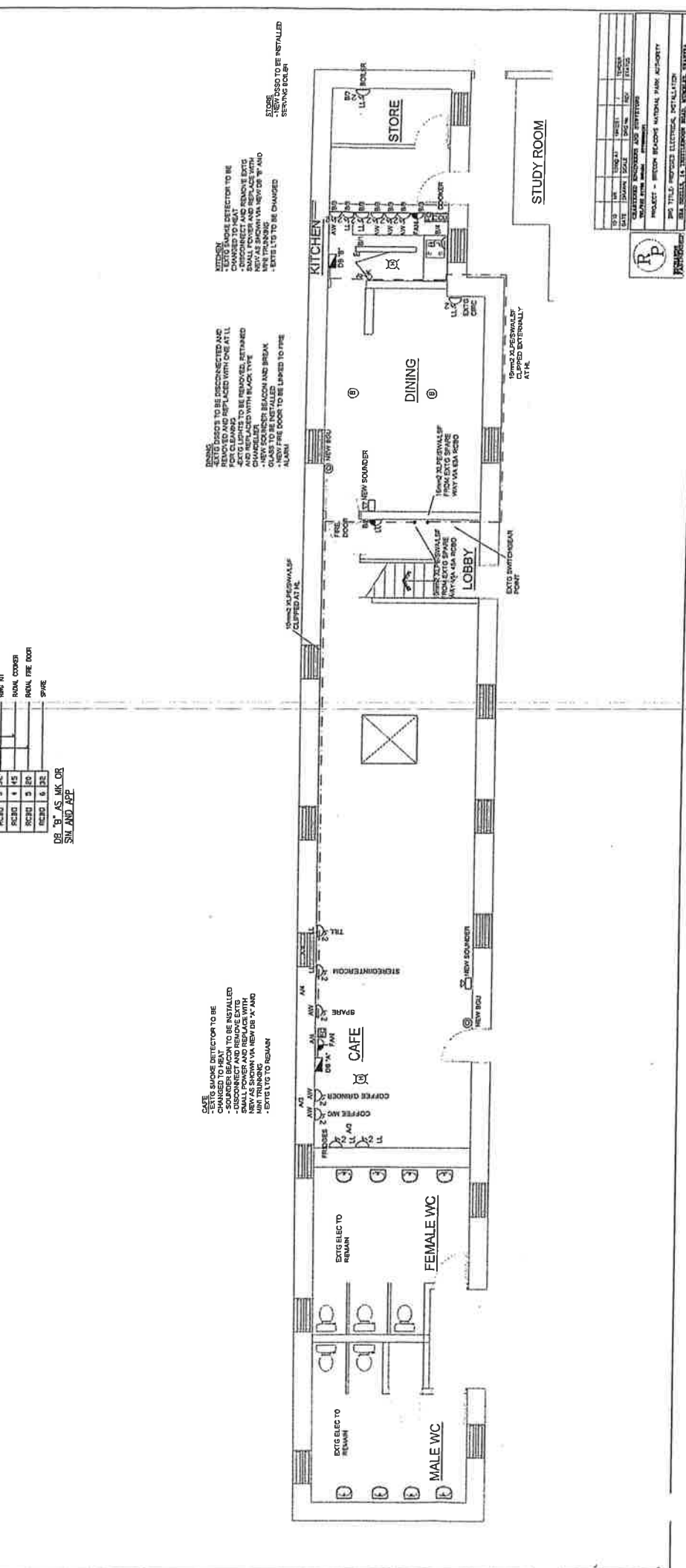
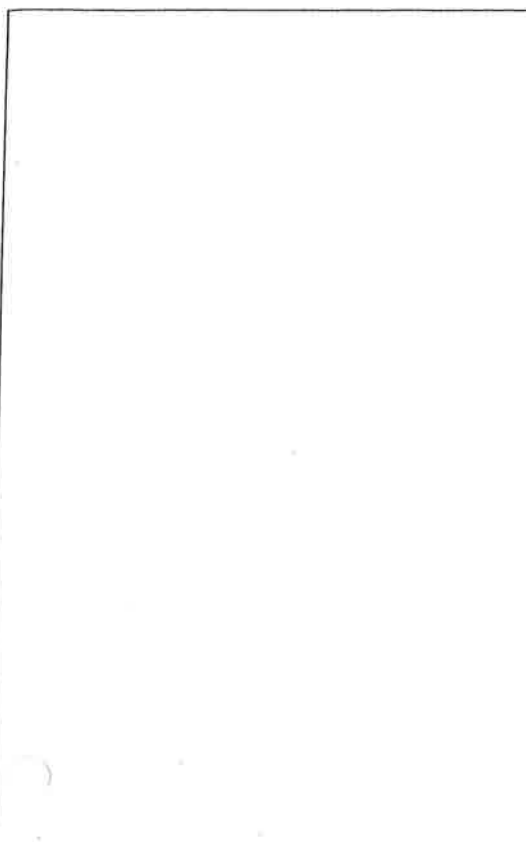
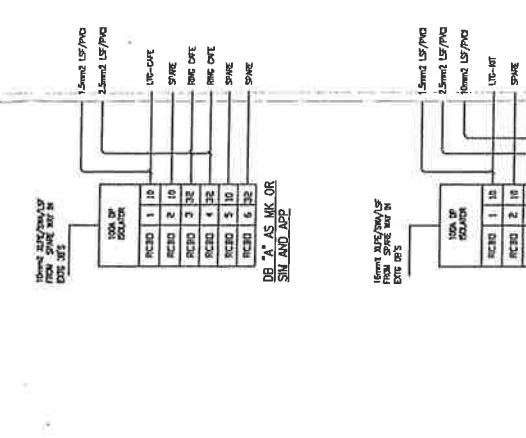
ELECTRICAL NOTIFICATION

THESE AND THE RELATED WORK SHALL BE IN ACCORDANCE WITH THE NATIONAL FIRE PROTECTION ASSOCIATION (NFPA) 70, NATIONAL ELECTRICAL CODE (NEC), WITH THE EXCEPTION OF ANY CHANGES SPECIFICALLY NOTED ON THIS DRAWING. THE CONTRACTOR SHALL BE RESPONSIBLE FOR OBTAINING ALL NECESSARY PERMITS AND NOTIFICATIONS FROM THE LOCAL JURISDICTION WITH THE PROJECT AND THE EXTENT OF THE WORK. TOGETHER WITH EXISTING AND NEW ELECTRICAL SERVICES FOR THE BUILDING AS SHOWN AND NOTED ON THIS DRAWING.

ALL WORK SHALL BE DONE IN ACCORDANCE WITH THE NATIONAL FIRE PROTECTION ASSOCIATION (NFPA) 70, NATIONAL ELECTRICAL CODE (NEC), WITH THE EXCEPTION OF ANY CHANGES SPECIFICALLY NOTED ON THIS DRAWING. THE CONTRACTOR SHALL BE RESPONSIBLE FOR OBTAINING ALL NECESSARY PERMITS AND NOTIFICATIONS FROM THE LOCAL JURISDICTION WITH THE PROJECT AND THE EXTENT OF THE WORK. TOGETHER WITH EXISTING AND NEW ELECTRICAL SERVICES FOR THE BUILDING AS SHOWN AND NOTED ON THIS DRAWING.

THE CONTRACTOR SHALL BE RESPONSIBLE FOR OBTAINING ALL NECESSARY PERMITS AND NOTIFICATIONS FROM THE LOCAL JURISDICTION WITH THE PROJECT AND THE EXTENT OF THE WORK. TOGETHER WITH EXISTING AND NEW ELECTRICAL SERVICES FOR THE BUILDING AS SHOWN AND NOTED ON THIS DRAWING.

- LEGEND**
- 1/2" SHOCK TUBE SWITCH AS IN LOGIC WIRING (HIGHLIGHTED IN BLUE)
 - 2/2" TWO WAY SWITCH AS IN LOGIC WIRING
 - 3/2" FAN EXHAUSTOR AS IN 42487 2004
 - 4/2" MOVEMENT TUBING ON THE ISOLATOR (FOR INFORMATION)
 - 5/2" 2004 SURFACE MOUNTED 1000MA FULCRUM CURRENT
 - 6/2" 2004 SURFACE MOUNTED 1000MA FULCRUM CURRENT
 - 7/2" 2004 SURFACE MOUNTED 1000MA FULCRUM CURRENT
 - 8/2" 2004 SURFACE MOUNTED 1000MA FULCRUM CURRENT
 - 9/2" 2004 SURFACE MOUNTED 1000MA FULCRUM CURRENT
 - 10/2" 2004 SURFACE MOUNTED 1000MA FULCRUM CURRENT
 - 11/2" 2004 SURFACE MOUNTED 1000MA FULCRUM CURRENT
 - 12/2" 2004 SURFACE MOUNTED 1000MA FULCRUM CURRENT
 - 13/2" 2004 SURFACE MOUNTED 1000MA FULCRUM CURRENT
 - 14/2" 2004 SURFACE MOUNTED 1000MA FULCRUM CURRENT
 - 15/2" 2004 SURFACE MOUNTED 1000MA FULCRUM CURRENT
 - 16/2" 2004 SURFACE MOUNTED 1000MA FULCRUM CURRENT
 - 17/2" 2004 SURFACE MOUNTED 1000MA FULCRUM CURRENT
 - 18/2" 2004 SURFACE MOUNTED 1000MA FULCRUM CURRENT
 - 19/2" 2004 SURFACE MOUNTED 1000MA FULCRUM CURRENT
 - 20/2" 2004 SURFACE MOUNTED 1000MA FULCRUM CURRENT
 - 21/2" 2004 SURFACE MOUNTED 1000MA FULCRUM CURRENT
 - 22/2" 2004 SURFACE MOUNTED 1000MA FULCRUM CURRENT
 - 23/2" 2004 SURFACE MOUNTED 1000MA FULCRUM CURRENT
 - 24/2" 2004 SURFACE MOUNTED 1000MA FULCRUM CURRENT
 - 25/2" 2004 SURFACE MOUNTED 1000MA FULCRUM CURRENT
 - 26/2" 2004 SURFACE MOUNTED 1000MA FULCRUM CURRENT
 - 27/2" 2004 SURFACE MOUNTED 1000MA FULCRUM CURRENT
 - 28/2" 2004 SURFACE MOUNTED 1000MA FULCRUM CURRENT
 - 29/2" 2004 SURFACE MOUNTED 1000MA FULCRUM CURRENT
 - 30/2" 2004 SURFACE MOUNTED 1000MA FULCRUM CURRENT
 - 31/2" 2004 SURFACE MOUNTED 1000MA FULCRUM CURRENT
 - 32/2" 2004 SURFACE MOUNTED 1000MA FULCRUM CURRENT
 - 33/2" 2004 SURFACE MOUNTED 1000MA FULCRUM CURRENT
 - 34/2" 2004 SURFACE MOUNTED 1000MA FULCRUM CURRENT
 - 35/2" 2004 SURFACE MOUNTED 1000MA FULCRUM CURRENT
 - 36/2" 2004 SURFACE MOUNTED 1000MA FULCRUM CURRENT
 - 37/2" 2004 SURFACE MOUNTED 1000MA FULCRUM CURRENT
 - 38/2" 2004 SURFACE MOUNTED 1000MA FULCRUM CURRENT
 - 39/2" 2004 SURFACE MOUNTED 1000MA FULCRUM CURRENT
 - 40/2" 2004 SURFACE MOUNTED 1000MA FULCRUM CURRENT
 - 41/2" 2004 SURFACE MOUNTED 1000MA FULCRUM CURRENT
 - 42/2" 2004 SURFACE MOUNTED 1000MA FULCRUM CURRENT
 - 43/2" 2004 SURFACE MOUNTED 1000MA FULCRUM CURRENT
 - 44/2" 2004 SURFACE MOUNTED 1000MA FULCRUM CURRENT
 - 45/2" 2004 SURFACE MOUNTED 1000MA FULCRUM CURRENT
 - 46/2" 2004 SURFACE MOUNTED 1000MA FULCRUM CURRENT
 - 47/2" 2004 SURFACE MOUNTED 1000MA FULCRUM CURRENT
 - 48/2" 2004 SURFACE MOUNTED 1000MA FULCRUM CURRENT
 - 49/2" 2004 SURFACE MOUNTED 1000MA FULCRUM CURRENT
 - 50/2" 2004 SURFACE MOUNTED 1000MA FULCRUM CURRENT



ATTENTION:

- SMOKE DETECTOR TO BE CHANGED TO HEAT
- SOUNDER BEACON TO BE INSTALLED
- SMALL POWER AND REPLACE WITH NEW AS SHOWN VIA NEW DB 'A' AND DB 'B' LVC TO REMAIN
- EXTG LVC TO REMAIN

NO.	REVISION	DATE	BY	CHKD.	STATUS
1	ISSUED FOR PERMITS	15/10/2024	J. SMITH	M. JONES	ISSUED
2	REVISED FOR COMMENTS	20/10/2024	J. SMITH	M. JONES	REVISED
3	REVISED FOR COMMENTS	25/10/2024	J. SMITH	M. JONES	REVISED
4	REVISED FOR COMMENTS	30/10/2024	J. SMITH	M. JONES	REVISED
5	REVISED FOR COMMENTS	05/11/2024	J. SMITH	M. JONES	REVISED
6	REVISED FOR COMMENTS	10/11/2024	J. SMITH	M. JONES	REVISED
7	REVISED FOR COMMENTS	15/11/2024	J. SMITH	M. JONES	REVISED
8	REVISED FOR COMMENTS	20/11/2024	J. SMITH	M. JONES	REVISED
9	REVISED FOR COMMENTS	25/11/2024	J. SMITH	M. JONES	REVISED
10	REVISED FOR COMMENTS	30/11/2024	J. SMITH	M. JONES	REVISED



REGISTERED ELECTRICAL ENGINEER
PROJECT - BRICK BUILDING NATIONAL PARK ACTIVITY
NO. 123456789
15/10/2024
10/11/2024
15/11/2024
20/11/2024
25/11/2024
30/11/2024

MECHANICAL SPECIFICATION

THIS SPEC TO BE READ IN CONNECTION WITH OTHER SPECIFICATIONS, BIDDING REGULATIONS PART I AND F. THE APPROVED DOCUMENTS, TOGETHER WITH DWG 14.13.14, 17.2 AND CURRENT CODE CONTRACTOR TO READ THE CONTRACT FROM THE CONTRACTOR'S PERSPECTIVE. THE CONTRACTOR SHALL BE RESPONSIBLE FOR THE PROJECT AND THE EXTENT OF THE WORK, TOGETHER WITH COORDINATING ALL SERVICES TO BE PROVIDED AND ALL THE FOLLOWING EXISTING AND NEW MECHANICAL SERVICES FOR THE BUILDING AS SHOWN AND CONSISTING OF:

- MECHANICAL SERVICES TO BE PROVIDED TO THE BUILDING AS SHOWN AND CONSISTING OF:
- ALL EXISTING HEATERS SERVING THE OF TO BE DISCONNECTED AND REMOVED IN THEIR ENTIRETY.
- CONTRACTOR TO REMOVE ALL EXISTING MECHANICAL SERVICES AND TO INSTALL NEW LOW VOLTAGE ELECTRICAL SERVICES TO THE BUILDING AS SHOWN AND CONSISTING OF:
- CONTRACTOR TO REMOVE ALL EXISTING MECHANICAL SERVICES AND TO INSTALL NEW LOW VOLTAGE ELECTRICAL SERVICES TO THE BUILDING AS SHOWN AND CONSISTING OF:
- CONTRACTOR TO REMOVE ALL EXISTING MECHANICAL SERVICES AND TO INSTALL NEW LOW VOLTAGE ELECTRICAL SERVICES TO THE BUILDING AS SHOWN AND CONSISTING OF:

WATER SERVICES
 EXISTING HOT AND COLD WATER SERVICES TO BE ALTERED AND EXTENDED TO ALLOW FOR THE NEW NEW AND NEW COLD WATER SERVICES TO BE SUPPLIED FROM A NEW LPG BOILER AND THE EXISTING WATER HEATER AND NEW SINK AND WHIS TO BE SUPPLIED BY CATERING SPECIALIST AND INSTALLED BY MECHANICAL CONTRACTOR. MECHANICAL CONTRACTOR TO LAISE WITH READING AUTHORITY TO ESTABLISH EXISTING WATER SERVICES AND TO PROVIDE NEW WATER SERVICES TO THE BUILDING AS SHOWN AND CONSISTING OF:

- CONTRACTOR TO TREAT AND DISINFECT THE WATER SERVICES WITH CHLORINE IN ACCORDANCE WITH CP191.
- CONTRACTOR TO TREAT AND DISINFECT THE WATER SERVICES WITH CHLORINE IN ACCORDANCE WITH CP191.
- CONTRACTOR TO TREAT AND DISINFECT THE WATER SERVICES WITH CHLORINE IN ACCORDANCE WITH CP191.
- CONTRACTOR TO TREAT AND DISINFECT THE WATER SERVICES WITH CHLORINE IN ACCORDANCE WITH CP191.
- CONTRACTOR TO TREAT AND DISINFECT THE WATER SERVICES WITH CHLORINE IN ACCORDANCE WITH CP191.

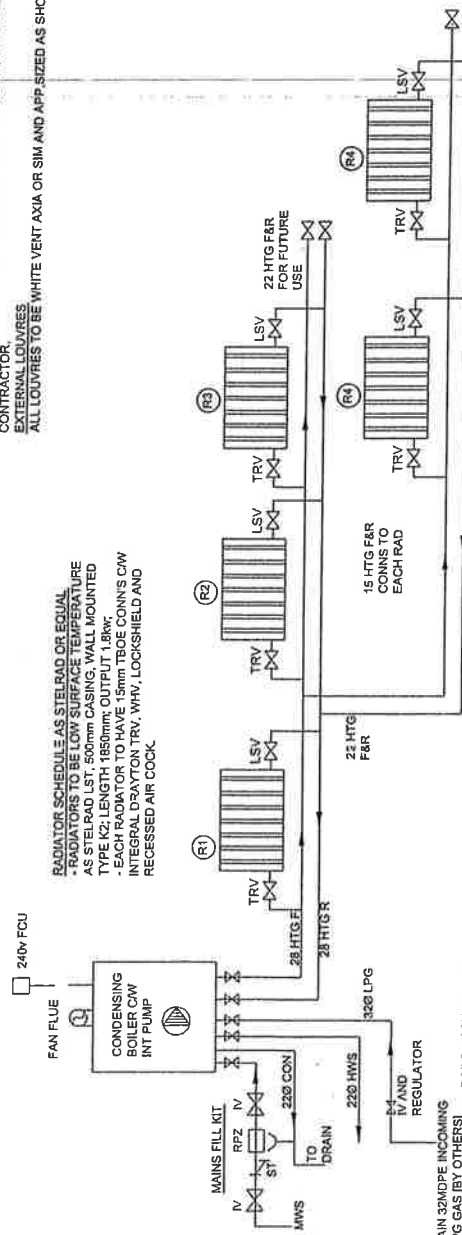
NEW VENTILATION
 ALL UNITS TO BE VENT AXIA CW 500mm EXTENSION WALL KITS, AIR BRICKS AND EXTERNAL SHUTTERS. LOUVERES ALL SUPPLIED BY MECHANICAL CONTRACTOR AND WIRED BY ELECTRICAL CONTRACTOR. ALL LOUVERES TO BE WHITE VENT AXIA OR SIM AND APP SIZED AS SHOWN (50% FREE AREA)

REF	DUTY	TYPE	MAKE	BWIC
EF1	L5@P3 210@25	PANEL	T-SERIES TX9PL CW WALL EXTENSION	2250
EF2	30@10	WALL	LO-CARBON VA150 HP CW AIR BRICK	1150

VENTILATION SCHEDULE

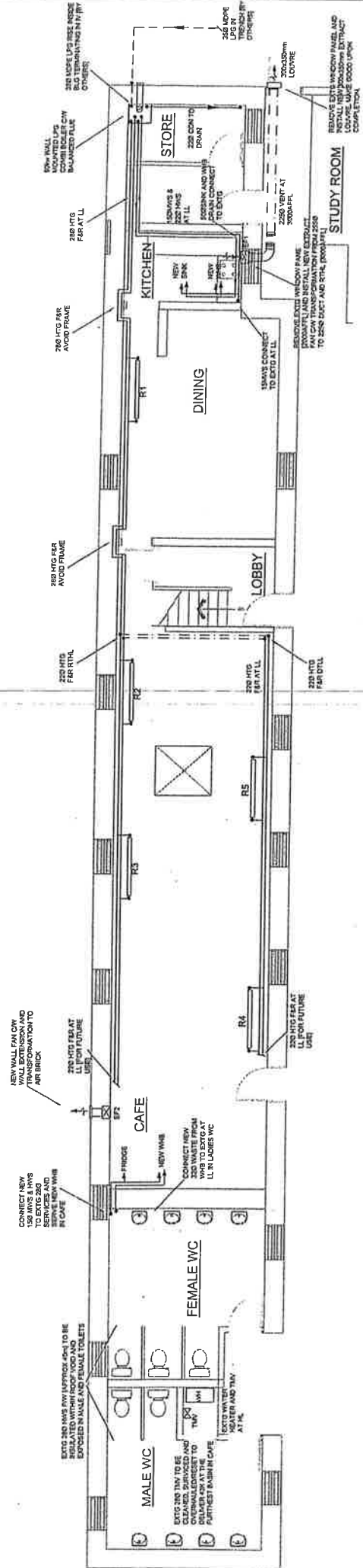
ALL UNITS TO BE VENT AXIA CW 500mm EXTENSION WALL KITS, AIR BRICKS AND EXTERNAL SHUTTERS. LOUVERES ALL SUPPLIED BY MECHANICAL CONTRACTOR AND WIRED BY ELECTRICAL CONTRACTOR. ALL LOUVERES TO BE WHITE VENT AXIA OR SIM AND APP SIZED AS SHOWN (50% FREE AREA)

RADIATOR SCHEDULE AS STELRAD OR EQUAL
 - RADIATORS TO BE LOW SURFACE TEMPERATURE AS STELRAD LST, 500mm CASING, WALL MOUNTED TYPE K2; LENGTH 1850mm; OUTPUT 1.8kW;
 - EACH RADIATOR TO HAVE 15mm TBOE CONN'S CW INTEGRAL DRAYTON TRV, WHV, LOCKSHIELD AND RECESSED AIR COCK.



BOILER SCHEMATIC

NEW 75KW CONDENSING LPG CONDENSING BOILER TO BE MHS ULTRAMAX OR SIM AND APP. CW BALANCED FLUE GAS CONTROLLED CONTRACTOR TO ALLOW FOR FLUE GAS TO NEARBY DRAIN AND FOR REDUCING P/W SIZES AT BOILER CONNS



NO	DATE	BY	CHKD BY	STATUS
1				
2				
3				

PROJECT - BROWN BUILDING NATIONAL BANK AUTHORITY
 DRAWN BY - M. J. O'NEILL
 CHECKED BY - M. J. O'NEILL
 DATE - 14/03/14



80% TITLE PROVIDED MECHANICAL INSTALLATION
 10% TITLE PROVIDED MECHANICAL INSTALLATION